

FLEX PIPE SOLUTIONS

FLEX PIPE SOLUTIONS

CHRYSLER / DODGE / PLYMOUTH

121681
Gasket 9289



1995-00 Chrysler Cirrus, Sebring 2.4L & 2.5L
1995-00 Dodge Stratus 2.0L, 2.4L & 2.5L
1998-00 Plymouth Breeze 2.0L & 2.4L

121682
Gasket 9013



642951
1996-99 Dodge Caravan
Plymouth Voyager 3.0L
With Inner Lock Flex (Inner Heat Shield)

121683
Gasket 9289



1996-00 Chrysler Town & Country, Dodge Caravan,
Plymouth Voyager 3.3L & 3.8L
2000-02 Dodge Neon 2.0L
With Inner Lock Flex (Inner Heat Shield)

FORD / LINCOLN / MERCURY

28363
Gasket 9079



90-97 Ford Aerostar 3.0L & 4.0L

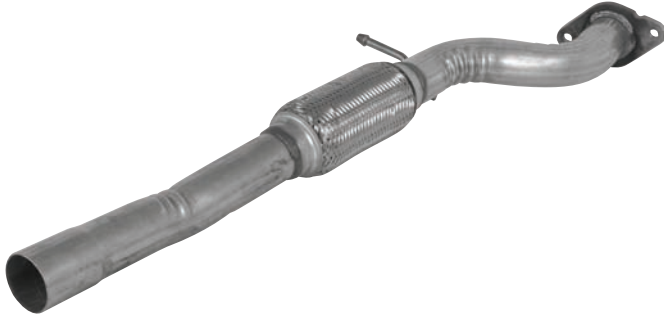
18177
Inlet & Outlet
Gasket 8728



1995-00 Ford Contour 2.5L w/ AT
1995-00 Mercury Mystique 2.5L w/ AT

FORD / LINCOLN / MERCURY

123529
Gasket 9274



1995-97 Ford Contour 2.0L
1995-97 Mercury Mystique 2.0L

28436



1992-96 Ford E150 / E250 Van 5.0L

121685
Gasket 9245



1987-95 Ford E-Series
1987-99 Ford F-Series

28337
Inlet & Outlet
Gasket 8689



1990-92 Ford Probe 3.0L

28453
Inlet Gasket 9255
Outlet Gasket 9256



1988-92 Ford Probe, 2.2L A/T *also fits Mazda*

28569
Gasket 9288



1996-99 Ford Taurus 3.0L
1996-99 Mercury Sable 3.0L

FLEX PIPE SOLUTIONS

FORD / LINCOLN / MERCURY

28365
Gasket 9079



1991-95 Ford Taurus 3.8L
1994-95 Ford Taurus 3.0L
1990-94 Lincoln Continental 3.8L
1991-95 Mercury Sable 3.8L
1994-95 Mercury Sable 3.0L

28545
Gasket 9079



1995-03 Ford Windstar 3.8L
1995-00 Ford Windstar 3.0L

GEO

122617
Gasket 8734



1989-94 Geo Tracker *also fits Suzuki*

GM

122618
Gasket 9207



1999-02 Chevrolet Cavalier 2.4L
1999-00 Chevrolet Malibu 2.4L
1999-01 Pontiac Grand Am 2.4L
1999-02 Pontiac Sunfire 2.4L
1999-01 Oldsmobile Alero 2.4L

121686
Gasket 9054



1996-98 Buick Skylark 2.4L
1996-98 Chevrolet Cavalier, 97-98 Malibu 2.4L
1996-98 Oldsmobile Achieva 2.4L
1996-98 Pontiac Grand Am, Sunfire 2.4L
with Inner Braid Flex

122619
Gasket 9054



1996-98 Chevrolet Cavalier / Pontiac Sunfire 2.4L
1997-98 Chevrolet Malibu 2.4L
With Inner Braid Flex

122620
Gasket 9054



1996-98 Chevrolet Cavalier / Pontiac Sunfire 2.4L
1997-98 Chevrolet Malibu 2.4L
Without Inner Braid Flex

122625
Gasket 9054



1996-98 Buick Skylark 2.4L AT
1996-98 Oldsmobile Achieva 2.4L AT
1996-98 Pontiac Grand Am 2.4L AT
With Inner Braid Flex

122621
Gasket 9088



1997-03 Buick Regal 3.8L
2000-03 Chevrolet Impala, Monte Carlo 3.8L
1998-99 Oldsmobile Intrigue 3.8L
1997-03 Pontiac Grand Prix 3.8L
With Inner Braid Flex

122622
Gasket 8762



2001 Chevrolet Venture 3.4L
2001 Oldsmobile Silhouette 3.4L
2001 Pontiac Montana 3.4L

122623
Gasket 9088



1998-99 Chevrolet Lumina, Monte Carlo 3.8L

FLEX PIPE SOLUTIONS

GM

123530
Gasket 8762



1997-00 Chevrolet Venture 3.4L
1997-00 Oldsmobile Silhouette 3.4L
1999-00 Pontiac Montana 3.4L
1997-98 Pontiac Transport 3.4L

122624
Gasket 8762



1997-04 Buick Century 3.1L
2000-04 Chevrolet Impala, Monte Carlo 3.4L
1997-03 Pontiac Grand Prix 3.1L

121687
Gasket 9238



1996-97 Chevrolet S10 Pickup 2.2L
1996-97 GMC S15 Sonoma Pickup 2.2L
1996-97 Isuzu Hombre 2.2L
With Inner Braid Flex

93993 Full Pipe
Inlet Gasket 9238
Outlet Gasket 9283



1996-97 Chevrolet S10 Pickup 2.2L
1996-97 GMC S15 Sonoma Pickup 2.2L
1996-97 Isuzu Hombre 2.2L

123532
Gasket 8762



1998-03 Chevrolet Malibu 3.1L
1999-04 Oldsmobile Alero 3.4L
1998-99 Oldsmobile Cutlass 3.1L
1999-03 Pontiac Grand Am 3.4L
With Inner Braid Flex

121688
Gasket 8731



1998-00 Chevrolet S10 Pickup 2.2L
1998-00 GMC S15 Sonoma Pickup 2.2L
With Inner Braid Flex

GM

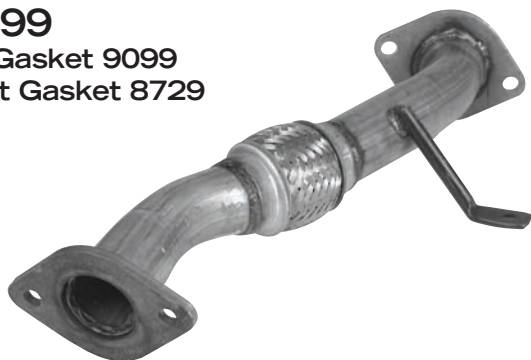
93994 Full Pipe
Inlet Gasket 8731
Outlet Gasket 9283



1998-00 Chevrolet S10 Pickup 2.2L
1998-00 GMC S15 Sonoma Pickup 2.2L

NISSAN

28399
Inlet Gasket 9099
Outlet Gasket 8729



1990-95 Nissan Pickup 2.4L

TOYOTA

122630
Gasket 8749(2)



1991-95 Toyota Previa
With Inner Braid Flex

MAZDA

28453
Inlet Gasket 9255
Outlet Gasket 9256



1988-92 Mazda 626, MX-6 2.2L exc. 88-89 M/T
also fits Ford

SUZUKI

122617
Gasket 8734



1989-94 Suzuki Sidekick

VOLKSWAGEN

121689



1987-92 Volkswagen Jetta & Golf 1.8L

FLEX PIPE SOLUTIONS

FLEX COUPLING

- Complete Coverage
- Constructed with 2-Ply Bellows
- Designed with a Seamless, Convolute Inner Core to Prevent Exhaust Leaks
- Increased Flexibility Reduces Vibrations
- Available with or without Expandable Nipple Extensions
- Available with Inner Braid



WITHOUT NIPPLE EXTENSION

P/N W/O INNER LINER	P/N WITH INNER BRAID	FLEX LENGTH	OVERALL LENGTH	INLET DIAMETER
8810	8810IB	4"	4"	1.77"
8811	8811IB	6"	6"	1.77"
8812	8812IB	8"	8"	1.77"
8813	8813IB	10"	10"	1.77"
8814	8814IB	4"	4"	2.02"
8815	8815IB	6"	6"	2.02"
8816	8816IB	8"	8"	2.02"
8817	8817IB	10"	10"	2.02"
8818	8818IB	4"	4"	2.27"
8819	8819IB	6"	6"	2.27"
8820	8820IB	8"	8"	2.27"
8821	8821IB	10"	10"	2.27"
8822	8822IB	4"	4"	2.52"
8823	8823IB	6"	6"	2.52"
8824	8824IB	8"	8"	2.52"
8825	8825IB	10"	10"	2.52"
8826	8826IB	4"	4"	3.02"
8827	8827IB	6"	6"	3.02"
8828	8828IB	8"	8"	3.02"
8829	8829IB	10"	10"	3.02"

WITH NIPPLE EXTENSION

P/N W/O INNER LINER	P/N WITH INNER BRAID	FLEX LENGTH	OVERALL LENGTH	INLET DIAMETER
8835	8835IB	4"	8"	1.75"
8836	8836IB	6"	10"	1.75"
8837	8837IB	8"	12"	1.75"
8838	8838IB	10"	14"	1.75"
8839	8839IB	4"	8"	2.00"
8840	8840IB	6"	10"	2.00"
8841	8841IB	8"	12"	2.00"
8842	8842IB	10"	14"	2.00"
8843	8843IB	4"	8"	2.25"
8844	8844IB	6"	10"	2.25"
8845	8845IB	8"	12"	2.25"
8846	8846IB	10"	14"	2.25"
8847	8847IB	4"	8"	2.50"
8848	8848IB	6"	10"	2.50"
8849	8849IB	8"	12"	2.50"
8850	8850IB	10"	14"	2.50"
8851	8851IB	4"	8"	3.00"
8852	8852IB	6"	10"	3.00"
8853	8853IB	8"	12"	3.00"
8854	8854IB	10"	14"	3.00"



300 Dixie Trail
 Goldsboro, NC 27530
 P. 919.580.2000
 F. 919.580.2010

www.apexhaust.com